



## Ceramic Grinding

Lancer Orthodontics is still celebrated as the first company to mass-produce high quality, competitively priced ceramic brackets. We use precision grinding/milling techniques to match CAD/CAM-generated templates, achieving an ultra-high degree of accuracy to create beautifully aesthetic brackets with the strength and functionality to ensure successful treatments.



## Accu-Grip™ Base

Designed for superior bond strength, Lancer's state-of-the-art Accu-Grip™ bases feature dovetail grooves that are engineered for increased retention. These grooves create geometric undercuts when bonded, and securely grip the adhesive, providing bond retention equal to or greater than mesh bonding pads.

# OPTYC™ CERAMIC PROVEN RESULTS AND MODERN DESIGN



(800) 854-2896 • [www.lancerortho.com](http://www.lancerortho.com)

International: +1 (760) 744-5585 • Fax: +1 (760) 598-0418  
2726 Loker Avenue West • Carlsbad, California 92010 (U.S.A.)  
[info@lancerortho.com](mailto:info@lancerortho.com)

*The Choice for Aesthetic Excellence*



# Optyc™ Ceramic

Precisely engineered and manufactured with an emphasis on performance and accuracy.

Lancer's Optyc™ ceramic brackets exhibit maximum strength and shape integrity while maintaining a totally aesthetic appearance throughout treatment.

With added new features and an improved classic design, Optyc™ offers a great choice in aesthetics for your patients.



- Smooth, contoured tie-wings for maximum patient comfort and mechanical functionality

- Rhomboidal shape for easy placement

- Blue colored wire slot aids in bracket placement (disappears after brushing)

- Unique bonding base is enhanced with Accu-Grip™ undercuts for a secure bond and easy debonding



## LANCER'S REDI-PAK™ COMES IN A VARIETY OF PRESCRIPTIONS

and keeps brackets in individualized, sealed packages until patients are ready for bonding. When it's time to treat, unfolding the Redi-Pak puts the brackets in "tweezer ready" position. And, if storage is required, Redi-Pak can be resealed and placed with your patient's chart.



### Roth Redi-Pak™

	Hooks	Slot .018	Slot .022
All Hooks	x	246-941	246-942
Cuspid Hooks	x	246-945	246-946

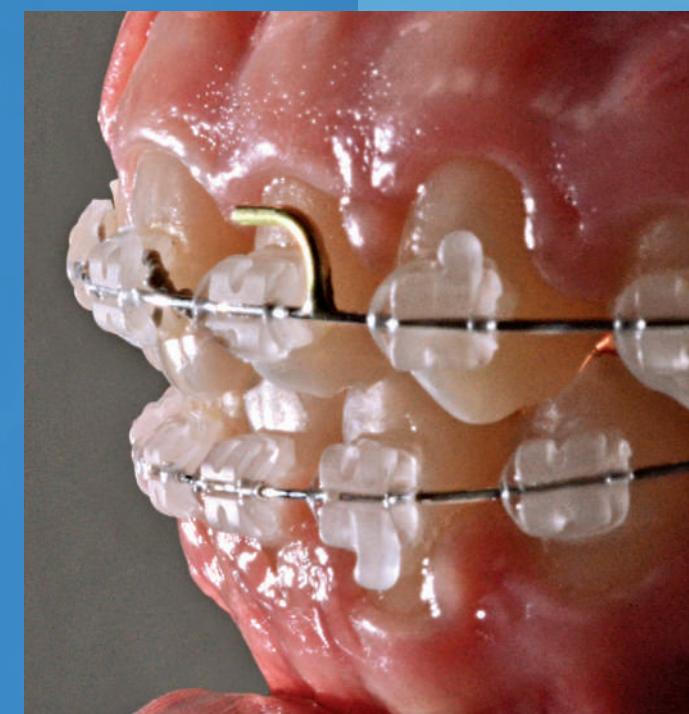
### MBT Redi-Pak™

	Hooks	Slot .018	Slot .022
All Hooks	x	231-941	231-942
Cuspid Hooks	x	231-947	231-948



## UNSURPASSED AESTHETIC QUALITIES

Lancer's Optyc™ aesthetic brackets are known for their "Chameleon Effect", where the premium quality polycrystalline cultured alumina from which they are manufactured allows the brackets to blend with the tooth color.



CERAMIC GRINDING



ACCU-GRIP BASE



REDI-PAK™