

STORM™ MINI-SCREW IS A FORCE FOR CHANGE



Temporary Anchorage Devices (TADs)

Storm™

ORTHODONTIC MINI-SCREW

The Storm™ Mini-Screw is a combination of Lancer's manufacturing technology and the clinical experience of a team of orthodontists specialized in skeletal anchorage. Storm is the easiest and most effective solution for the common needs of anchorage in orthodontics. Easy to insert and to remove, the Storm™ Mini-Screw provides the best and simplest answer to intraoral anchorage needs.

SIMPLE

Storm™ is available in three sizes and color coded for immediate identification: Blue, Light Blue and Aluminum. The intraosseous portion, provided with an asymmetrical threading, reduces trauma from the device and enhances strength distribution in the perio implant area. Self-tapping and self-drilling, and thanks to its apical flute, in many cases the Storm™ Mini-Screw can be inserted without the use of burs, which has evident advantages for the patient.



Eyelet size .022"x .028"



.022"x .028" Slot

SAFE

During production, the Storm™ Mini-Screw undergoes thorough cleaning cycles, decontamination in an acid environment and sterilization with ionizing radiation. The device is delivered sterile which reduces the risks of contamination and makes the Storm™ Mini-Screw ready for immediate use.

The asymmetrical threading provides apical loading which makes the device a stable anchoring system and ready for immediate orthodontic treatment.

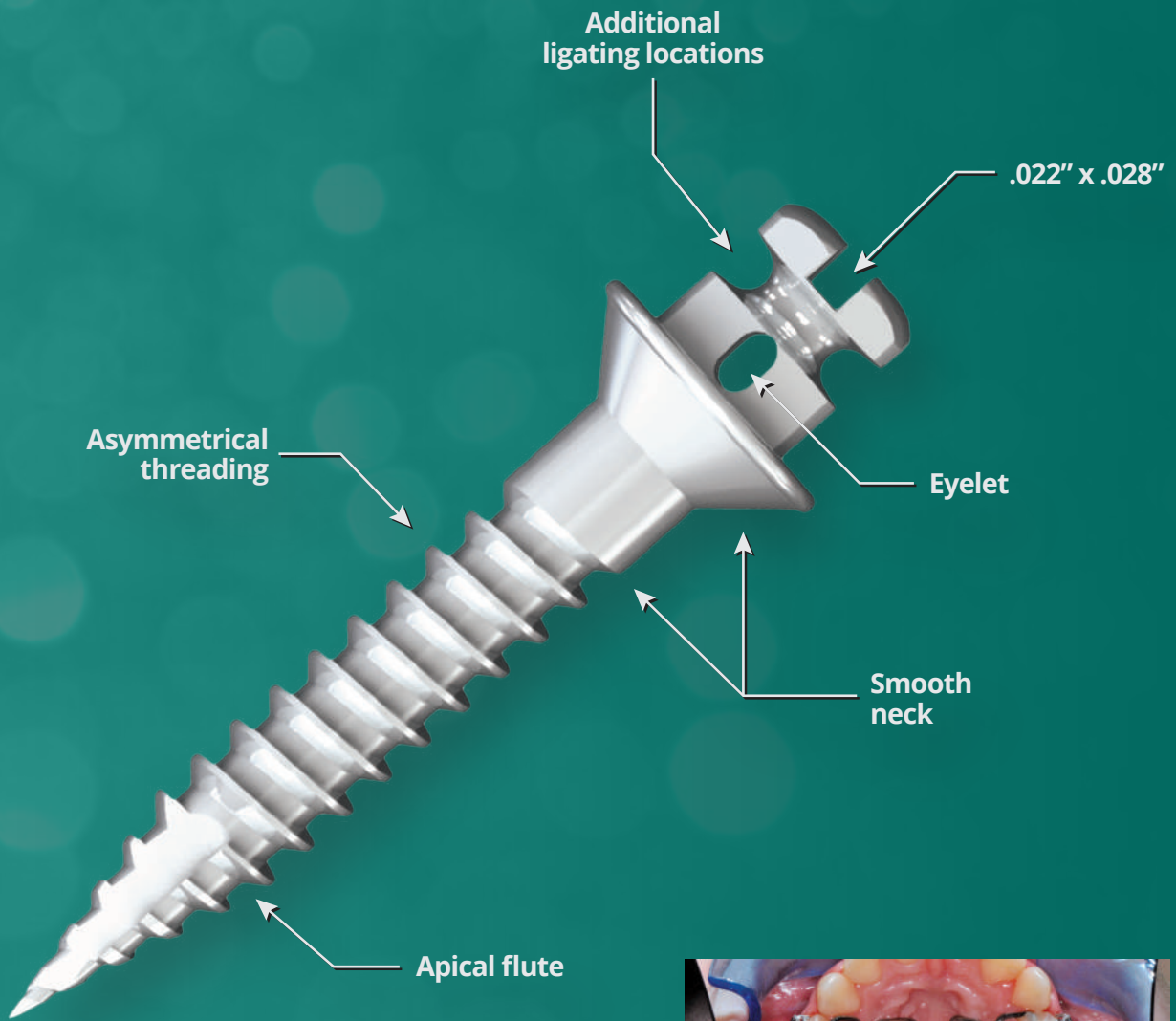
Construction from Grade 5 Titanium assures stability and allows use on nickel sensitive patients.

VERSATILE

The versatility of the Storm™ Mini-Screw is demonstrated by the presence of several different ligation options:

- Slot on the head of the Mini-Screw facilitates anchorage with metal orthodontic auxiliaries
- Eyelet exactly replicates the function of a buccal tube
- Also offers a third ligation option positioned between the slot and the eyelet

The three ligation options are designed to be used concurrently without interfering with each other. Three different sizes provide a correct option in most clinical cases. The transgingival portion of the Storm™ Mini-Screw has a variable length in order to better adapt to the thickness of the mucosa, additionally increasing the flexibility of use.



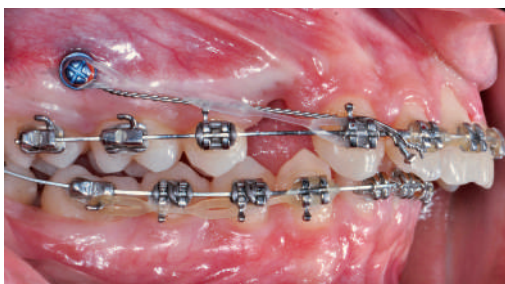
Storm Mini-Screw utilized in the palate with a palatal bar in conjunction with steel ligature wire.



Storm Mini-Screw engaged and distalizing the second upper bicuspid.






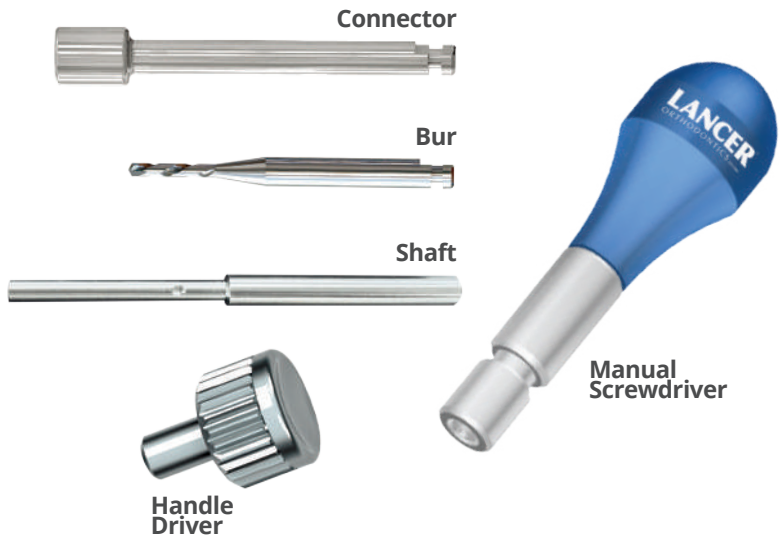
Storm Mini-Screw correctly placed between the first upper molar and the second bicuspid.



Storm Mini-Screw used with elastic chain and stainless steel ligature for cuspid retraction in Class 1 malocclusion.

STORM™ MINI-SCREW

	Diameter	Intraosseous Length	Neck Length	Total Length	Item
	1.5mm	8mm	1.5mm	12.38mm	SAMS12
	2mm	10mm	1.5mm	14.38mm	SAMS14
	2mm	10mm	3mm	15.88mm	SAMS15



STORM™ ACCESSORIES

	In Kit	Item
Surgical Kit		SASKIT
Manual Screwdriver	x	SASKIT-R1
Connector Handpiece 20mm	x	SASKIT-R2
Connector Handpiece 25mm	x	SASKIT-R3
Connector Handpiece 30mm (Optional)		SASKIT-R7
Bur Dia. 1.1mm/Length 7mm	x	SASKIT-R4
Bur Dia. 1.4mm/Length 8mm	x	SASKIT-R5
Screwdriver Shaft 10mm	x	SASKIT-R8
Screwdriver Shaft 20mm	x	SASKIT-R9
Screwdriver Shaft 30mm (Optional)		SASKIT-R10
Screwdriver Shaft 50mm (Optional)		SASKIT-R11
Handle Driver (Optional)		SASKIT-R6

Storm™ Surgical Kit

Plastic case with removable cover, autoclavable at 134° C.



(800) 854-2896 • www.lancerortho.com

International: +1 (760) 744-5585 • Fax: +1 (760) 598-0418
 2726 Loker Avenue West • Carlsbad, California 92010 (U.S.A.)
info@lancerortho.com